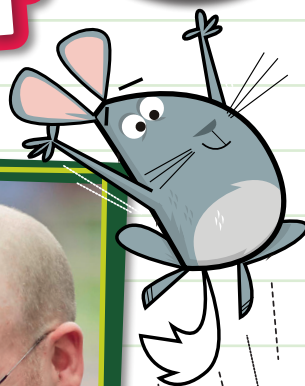


# cubs



## Animal Carer Activity Badge



Care for an  
animal to get  
your badge!



**pets**  
at home

Name: .....

EVE10000667

# Hello!

Welcome to this workbook, where you'll find everything you need to get your **Animal Carer Activity Badge**.



To earn the badge, you'll need to complete three activities:

- **ONE** from **Section A**
- **TWO** from **Section B**

Along the way, you'll learn all about the 5 Welfare Needs of animals.



## Safety

Remember, it's important to wash your hands after handling animals.

Look out for the puzzles at the end of the workbook!

**pets**  
at home

## The 5 welfare needs

Here's what an animal needs from you to be safe and happy its whole life

### 1. A safe place to live

Animals should have the right type of home, including shelter, space and opportunities to exercise, and somewhere comfortable to rest and hide.

### 2. Food and water

Animals need to have access to fresh, clean drinking water all the time and should be fed the right amount and type of food to keep them fit and healthy.

### 3. To behave normally

Animals should have enough space and the right sort of toys and housing so they can behave normally.

### 4. Having the right company

Some animals need to have friends of their own kind. Animals should have the right sort of company and some should be kept on their own – find out what is best before you get your pet.

### 5. Good health

Animals should be protected from pain, suffering, injury and disease and should be treated by a vet if they are sick or injured.





# Caring for a pet

To complete this activity you need to:

- Look after a pet for two months
- Know what food your pet eats
- Recognise common traits and habits including how to groom, clean and exercise them

**DID YOU  
KNOW?**

Adult cats only miaow  
to people – not to  
other cats!

Pet's name:

Species or breed:

Diet:

Common illnesses:

Treatment:



Your pet should always have the right amount of food – ask a colleague in your local Pets at Home store for more info.





# Caring for a farm animal



**To complete this activity you need to:**

- Look after a farm animal for two months
- Know what food your farm animal eats
- Recognise common illnesses and know how to treat them
- Understand the special care that's needed before and after the birth of farm animals

**Species or breed:**

.....

.....

**Diet:**

.....

.....

.....

.....

.....

**Common illnesses:**

.....

.....

**Treatment:**

.....

.....

.....

.....

## Mini quiz

**What is the most common farm animal in the UK?**

- a) Sheep
- b) Pig
- c) Cow

**Answer:**



answers on page 12

**Special care needed before birth:**

.....

.....

.....

**Special care needed after birth:**

.....

.....

.....



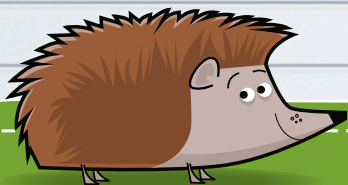
# Wildlife diary

To complete this activity you need to:

- Observe bird, mammal or insect life in your garden or local park for two months
- Keep a record of your findings, in the form of notes and sketches



Use this space to make notes and sketches.



## DID YOU KNOW?

Hedgehogs can swim, run surprisingly fast, and even scramble up walls!



If you're having a bonfire, always check the pile carefully for sleeping hedgehogs before you light it.



# Zoo or wildlife park visit



**To complete this activity you need to:**

- Visit a zoo, wildlife park, animal sanctuary or rescue centre
- Find out about the feeding habits and natural habitats of some of the animals you see

*Where did you visit?*

*What did you find out?*

## Mini quiz

Which of these animals eats a mix of meat and plants?

- a) Brown bear
- b) Lion
- c) Tiger

Answer:

answers on page 12







# Join a group or society

To complete this activity you need to:

- Join an animal group or society
- Take part in one of its activities, or make progress in an award scheme it offers

Name of group or society

Activity

You can help wild animals too!



**DID YOU KNOW?**

The RSPCA is the oldest animal welfare charity in the world – it was founded in 1824!



Why not get your whole Pack involved in a sponsored walk or a cake sale to raise money for animal protection?



# Animals in the countryside

**To complete this activity you need to:**

- Learn about dangers in the countryside that threaten wildlife
- Design a poster or leaflet about threats to wildlife, or tell other Cub Scouts about what you've found

Use this space to sketch out some ideas for a poster or leaflet.



## Mini quiz

Which of these animals spends much of its time in water?

- a) Badger
- b) Shrew
- c) Otter

Answer:

answers on page 12



If you find an injured wild animal, don't touch it – call a vet or the RSPCA first.





# Record sheet

To complete this activity you need to:

- Learn and understand what you need to do and be aware of when deciding to own a pet

Record any extra findings you make while doing your activities here.



I bet you've found out some cool stuff!



# Puzzles

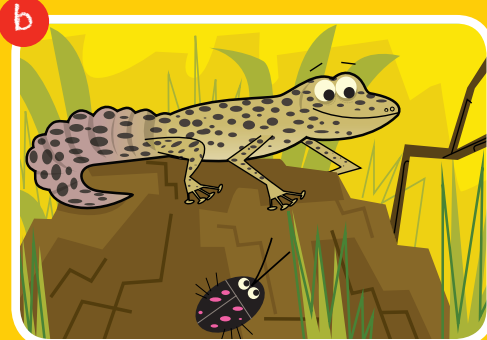
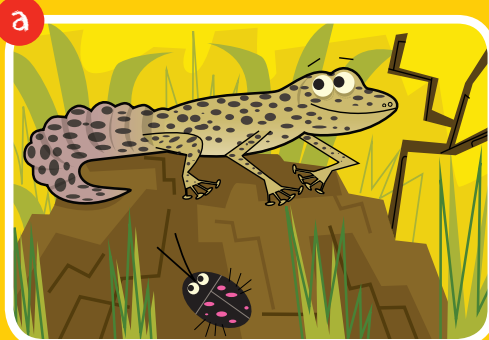
## GUINEAS GO HOME!

Find a way for each guinea pig to get through the maze and back to their home.



## LEOPARD SPOT

Can you spot five differences between these two leopard gecko pictures?



# FOOD MIXER

Unscramble the names of these animals' foods, then match them with the right picture.



SHIF KLEAFS



YAH



ARCTOR



RECTICK



COILCORB



1



2



3



4



5

# FINDING FISH

Can you find all these fishy words hidden in the grid? They can run up, down, left right or diagonally!

- ☐ AQUARIUM
- ☐ FILTER
- ☐ FIN
- ☐ FLAKES
- ☐ GILL
- ☐ GRAVEL
- ☐ PUMP
- ☐ SCALES
- ☐ TAIL
- ☐ WATER

V	Q	P	M	K	P	G	G	W	L	F	G	V	L
L	Q	Y	U	G	O	M	A	F	S	L	T	E	Q
Q	G	J	I	W	N	T	U	E	L	A	M	P	B
E	X	R	R	O	E	H	L	P	I	K	M	I	J
N	H	R	A	R	O	A	B	X	A	E	I	G	K
T	L	L	U	V	C	C	G	O	T	S	T	I	C
J	G	N	Q	S	E	Z	F	J	I	L	M	W	E
P	Y	W	A	H	X	L	D	L	L	I	G	N	F
L	A	O	F	T	H	H	S	L	V	Z	I	X	M
D	G	C	P	B	Z	Q	D	A	I	F	A	W	P
F	I	L	T	E	R	C	R	J	I	O	D	S	E
Q	B	Y	G	G	G	F	Z	O	E	N	I	Z	O
A	B	H	T	H	L	Q	I	Q	K	C	D	H	Q
Z	N	B	W	I	R	B	T	E	U	A	X	W	M



# Animal welfare

For more information on animal welfare, you can contact any of these organisations:

- The Blue Cross**  
 Shilton Road, Burford,  
 Oxfordshire  
 OX18 4PF  
 0300 777 1897  
[bluecross.org.uk](http://bluecross.org.uk)
- Cats Protection**  
 National Cat Centre,  
 Chelwood Gate,  
 Haywards Heath, Sussex  
 RH17 7TT • 03000 12 12 12  
[cats.org.uk](http://cats.org.uk)
- Dogs Trust**  
 17 Wakley Street, London  
 EC1V 7RQ • 020 7837 0006  
[dogstrust.org.uk](http://dogstrust.org.uk)
- People's Dispensary for Sick Animals (PDSA)**  
 Whitechapel Way, Priorslee,  
 Telford, Shropshire TF2 9PQ  
 0800 731 2502  
[pdsa.org.uk](http://pdsa.org.uk)
- The Royal Society for the Prevention of Cruelty to Animals (RSPCA)**  
 Wilberforce Way, Southwater,  
 Horsham, West Sussex  
 RH13 9RS  
 0870 33 35 999  
[rspca.org.uk](http://rspca.org.uk)
- WWF-UK**  
 The Living Planet Centre,  
 Rufford House, Brewery  
 Road, Woking, Surrey  
 GU21 4LL  
 01483 426444  
[wwf.org.uk](http://wwf.org.uk)
- World Animal Protection**  
 World Animal Protection UK,  
 5th Floor,  
 222 Grays Inn Road,  
 London WC1X 8HB  
 0800 316 9966  
[worldanimalprotection.org.uk](http://worldanimalprotection.org.uk)

## Answers

Page 4 Mini quiz: a

Page 6 Mini quiz: a

Page 8 Mini quiz: c

Pages 10-11

Guineas

go home!:

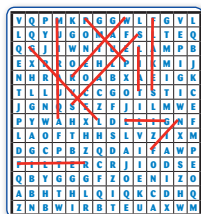


Leopard spot:



Food mixer: Fish flakes – 3, Cricket – 2, Hay – 1, Carrot – 5, Broccoli – 4

Finding fish:



For more details please contact your local  
 Pets at Home store or visit [petsathome.com](http://petsathome.com)

Pets at Home Limited,  
 Epsom Avenue, Stanley Green Trading Estate,  
 Handforth, Cheshire SK9 3RN

